

master plan 2015-2035

Phase 1 (2015-2025)

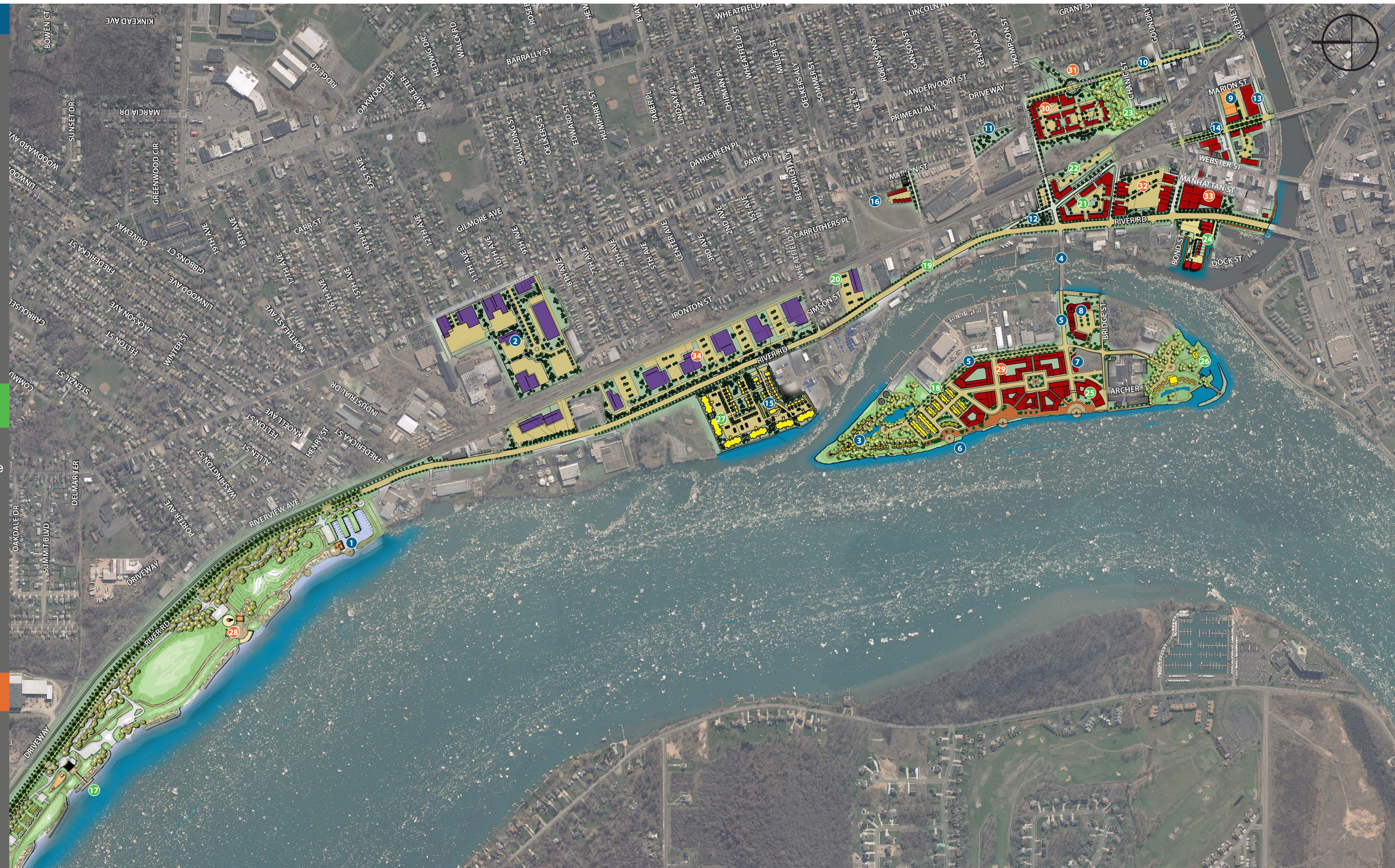
1. Gratwick Riverside Park and Marina Improvements
2. Buffalo Bolt Business Park Redevelopment
3. North Island Residential and Park Development
4. Thompson Street Bridge Rehabilitation
5. Taylor Drive and Island Boulevard Construction
6. Tonawanda Island Promenade
7. Office Mixed-Use
8. Retail/Restaurant Mixed-Use and Little River Promenade
9. Downtown Structured Parking
10. Oliver Street Enhancements
11. New Pocket Park
12. Gateway Memorial Park
13. Hotel
14. Main Street Pedestrian Enhancements
15. Multi-Family Residential
16. Multi-Tenant Warehouse Facility

Phase 2 (2025-2030)

17. Gratwick Riverside Park Redevelopment Phase 2
18. Tonawanda Island Internal Roads, Central Park, Mixed Use
19. River Road Reconstruction
20. Industrial Infill, Redevelopment, Access Management
21. Mixed-Use Redevelopment
22. Interpretive Rail Park and Museum
23. Thompson Street Improvements
24. Weatherbest Slip Redevelopment
25. Phase One Hotel and Restaurant
26. Residential
27. Multi-Family Residential

Phase 3 (2030 and Beyond)

28. Gratwick Riverside Park Redevelopment Phase 3
29. Mixed-Use with Structured Parking
30. Townhomes and Oliver Street of Shoppes
31. Enhanced Oliver Street Gateway
32. Mixed-Use Housing and Municipal Parking lot
33. Manhattan Street Mixed-Use and Parking Structure
34. Office Park



The Master Plan represents the culmination of a multi-year planning process led by the Lumber City Development Corporation, with input provided by a project steering committee and members of the community.

master plan 2015-2035

Phase 1 (2015-2025)

1. Gratwick Riverside Park and Marina Improvements
2. Buffalo Bolt Business Park Redevelopment
3. North Island Residential and Park Development
4. Thompson Street Bridge Rehabilitation
5. Taylor Drive and Island Boulevard Construction
6. Tonawanda Island Promenade
7. Office Mixed-Use
8. Retail/Restaurant Mixed-Use and Little River Promenade
9. Downtown Structured Parking
10. Oliver Street Enhancements
11. New Pocket Park
12. Gateway Memorial Park
13. Hotel
14. Main Street Pedestrian Enhancements
15. Multi-Family Residential
16. Multi-Tenant Warehouse Facility

Phase 2 (2025-2030)

17. Gratwick Riverside Park Redevelopment Phase 2
18. Tonawanda Island Internal Roads, Central Park, Mixed Use
19. River Road Reconstruction
20. Industrial Infill, Redevelopment, Access Management
21. Mixed-Use Redevelopment
22. Interpretive Rail Park and Museum
23. Thompson Street Improvements
24. Weatherbest Slip Redevelopment
25. Phase One Hotel and Restaurant
26. Residential
27. Multi-Family Residential

Phase 3 (2030 and Beyond)

28. Gratwick Riverside Park Redevelopment Phase 3
29. Mixed-Use with Structured Parking
30. Townhomes and Oliver Street of Shoppes
31. Enhanced Oliver Street Gateway
32. Mixed-Use Housing and Municipal Parking lot
33. Manhattan Street Mixed-Use and Parking Structure
34. Office Park



The Master Plan represents the culmination of a multi-year planning process led by the Lumber City Development Corporation, with input provided by a project steering committee and members of the community.